

2005 STATISTICS

This section includes data, by jurisdiction, on the number of persons taking and passing bar examinations in 2005, the number taking and passing bar examinations categorized by source of legal education, the number of and passage rates for first-time exam takers and repeaters, the number of attorney candidates taking and passing special attorneys' examinations, and the number of disbarred or suspended attorneys taking and passing examinations as a condition of reinstatement.

Also included is a chart showing a longitudinal view of bar passage rates, both overall and for first-time takers, over a ten-year period. There is also a five-year snapshot, by jurisdiction, of the number of persons admitted by examination, on motion, and by diploma privilege, and the number of individuals licensed as foreign legal consultants.

Data for the first seven tables were supplied by the jurisdictions. In reviewing the data, the reader should keep in mind that some individuals seek admission in more than one jurisdiction in a given year.

Pages 37-41 give data from the 2005 administrations of the Multistate Bar Examination (MBE) and the Multistate Professional Responsibility Examination (MPRE). Pages 42 and 43 show the use, by jurisdiction, of the Multistate Essay Examination (MEE) and the Multistate Performance Test (MPT).

PERSONS TAKING AND PASSING THE 2005 BAR EXAMINATION

Jurisdiction	Days of Testing	Taking February	Passing February	Percent Passing	Taking July	Passing July	Percent Passing	Total Taking	Total Passing	Percent Passing
Alabama	2.5	245	121	49%	525	375	71%	770	496	64%
Alaska	2.5	62	44	71%	70	39	56%	132	83	63%
Arizona	2	384	256	67%	758	512	68%	1,142	768	67%
Arkansas	2.5	102	68	67%	247	178	72%	349	246	70%
California	3	4,520	1,810	40%	8,343	4,072	49%	12,863	5,882	46%
Colorado	2	446	288	65%	841	593	71%	1,287	881	68%
Connecticut	2	402	278	69%	872	663	76%	1,274	941	74%
Delaware	2.5	<i>No February Examination</i>			260	149	57%	260	149	57%
District of Columbia	2	299	165	55%	294	137	47%	593	302	51%
Florida	2	1,613	932	58%	2,894	1,777	61%	4,507	2,709	60%
Georgia	2	412	247	60%	1,252	960	77%	1,664	1,207	73%
Guam	2	8	6	75%	5	4	80%	13	10	77%
Hawaii	2	120	87	73%	200	141	71%	320	228	71%
Idaho	2.5	59	40	68%	148	114	77%	207	154	74%
Illinois	2	1,059	734	69%	2,813	2,274	81%	3,872	3,008	78%
Indiana	2	243	176	72%	576	440	76%	819	616	75%
Iowa	2.5	102	80	78%	227	184	81%	329	264	80%
Kansas	2	218	173	79%	258	189	73%	476	362	76%
Kentucky	2	223	152	68%	419	309	74%	642	461	72%
Louisiana	3	352	255	72%	710	483	68%	1,062	738	69%
Maine	2	90	58	64%	156	115	74%	246	173	70%
Maryland	2	650	378	58%	1,604	1,082	67%	2,254	1,460	65%
Massachusetts	2	664	401	60%	2,010	1,537	76%	2,674	1,938	72%

PERSONS TAKING AND PASSING THE 2005 BAR EXAMINATION

<i>Jurisdiction</i>	<i>Days of Testing</i>	<i>Taking February</i>	<i>Passing February</i>	<i>Percent Passing</i>	<i>Taking July</i>	<i>Passing July</i>	<i>Percent Passing</i>	<i>Total Taking</i>	<i>Total Passing</i>	<i>Percent Passing</i>
Michigan	2	546	303	55%	897	615	69%	1,443	918	64%
Minnesota	2	172	119	69%	769	647	84%	941	766	81%
Mississippi	3	130	108	83%	271	231	85%	401	339	85%
Missouri	2	302	226	75%	826	692	84%	1,128	918	81%
Montana	2.5	64	53	83%	126	106	84%	190	159	84%
Nebraska	1.5	39	18	46%	160	128	80%	199	146	73%
Nevada	2.5	331	221	67%	458	242	53%	789	463	59%
New Hampshire	2	82	41	50%	153	86	56%	235	127	54%
New Jersey	2	1,072	655	61%	3,435	2,484	72%	4,507	3,139	70%
New Mexico	2	127	96	76%	215	181	84%	342	277	81%
New York	2	3,213	1,525	47%	10,175	6,809	67%	13,388	8,334	62%
North Carolina	2	423	257	61%	905	594	66%	1,328	851	64%
North Dakota	2	21	16	76%	44	38	86%	65	54	83%
N. Mariana Islands	1.5	0	0	—	9	9	100%	9	9	100%
Ohio	2.5	519	321	62%	1,386	1,035	75%	1,905	1,356	71%
Oklahoma	2	155	118	76%	364	306	84%	519	424	82%
Oregon	2	231	133	58%	552	391	71%	783	524	67%
Palau	3	1	1	100%	6	4	67%	7	5	71%
Pennsylvania	2	741	464	63%	2,234	1,616	72%	2,975	2,080	70%
Puerto Rico ^a	2.5	425	152	36%	671	268	40%	1,096	420	38%
Rhode Island	2	60	38	63%	183	119	65%	243	157	65%
South Carolina	3	178	134	75%	390	318	82%	568	452	80%
South Dakota	2	44	29	66%	84	63	75%	128	92	72%
Tennessee	2	223	142	64%	684	529	77%	907	671	74%
Texas	2.5	1,178	754	64%	2,820	2,091	74%	3,998	2,845	71%
Utah	2	132	112	85%	304	264	87%	436	376	86%
Vermont	2	41	31	76%	87	62	71%	128	93	73%
Virgin Islands	2	32	21	66%	32	23	72%	64	44	69%
Virginia	2	562	353	63%	1,367	963	70%	1,929	1,316	68%
Washington	2.5	488	370	76%	913	630	69%	1,401	1,000	71%
West Virginia	2	116	67	58%	219	147	67%	335	214	64%
Wisconsin	2	116	90	78%	182	139	76%	298	229	77%
Wyoming	1.5	42	31	74%	75	53	71%	117	84	72%
TOTALS		24,079	13,748	57%	56,478	38,210	68%	80,557	51,958	64%

a. Examinations are administered in March and September in Puerto Rico.

**PERSONS TAKING AND PASSING THE 2005 BAR EXAMINATION
BY SOURCE OF LEGAL EDUCATION**

<i>Jurisdiction</i>	<i>ABA-Approved Law School</i>			<i>Non-ABA-Approved Law School</i>			<i>Law School Outside the USA</i>			<i>Law Office Study</i>		
	<i>Taking</i>	<i>Passing</i>	<i>Percent Passing</i>	<i>Taking</i>	<i>Passing</i>	<i>Percent Passing</i>	<i>Taking</i>	<i>Passing</i>	<i>Percent Passing</i>	<i>Taking</i>	<i>Passing</i>	<i>Percent Passing</i>
Alabama	478	401	84%	291	95	33%	1	1	100%	—	—	—
Alaska	131	82	63%	—	—	—	1	1	100%	—	—	—
Arizona	1,122	757	67%	14	7	50%	6	4	67%	—	—	—
Arkansas	349	246	70%	—	—	—	—	—	—	—	—	—
California ^a	9,191	4,987	54%	2,257	354	16%	—	—	—	5	1	20%
Colorado	1,275	877	69%	2	2	100%	10	2	20%	—	—	—
Connecticut	1,218	927	76%	52	14	27%	4	0	0%	—	—	—
Delaware	260	149	57%	—	—	—	—	—	—	—	—	—
District of Columbia	543	287	53%	50	15	30%	—	—	—	—	—	—
Florida	4,502	2,707	60%	5	2	40%	—	—	—	—	—	—
Georgia	1,571	1,199	76%	93	8	9%	—	—	—	—	—	—
Guam	13	10	77%	—	—	—	—	—	—	—	—	—
Hawaii	317	225	71%	3	3	100%	—	—	—	—	—	—
Idaho	207	154	74%	—	—	—	—	—	—	—	—	—
Illinois	3,857	3,002	78%	—	—	—	15	6	40%	—	—	—
Indiana	819	616	75%	—	—	—	—	—	—	—	—	—
Iowa	329	264	80%	—	—	—	—	—	—	—	—	—
Kansas	476	362	76%	—	—	—	—	—	—	—	—	—
Kentucky	641	461	72%	—	—	—	1	0	0%	—	—	—
Louisiana	1,034	734	71%	—	—	—	28	4	14%	—	—	—
Maine	244	172	70%	2	1	50%	—	—	—	—	—	—
Maryland	2,238	1,454	65%	16	6	38%	—	—	—	—	—	—
Massachusetts	2,358	1,836	78%	308	97	31%	8	5	63%	—	—	—
Michigan	1,443	918	64%	—	—	—	—	—	—	—	—	—
Minnesota	941	766	81%	—	—	—	—	—	—	—	—	—
Mississippi	401	339	85%	—	—	—	—	—	—	—	—	—
Missouri	1,105	912	83%	2	1	50%	21	5	24%	—	—	—

a. California examined another 1,410 candidates (692 in February and 718 in July) who have not been categorized by source of education. Of these candidates, 540, or 38 percent, passed (339 in February and 201 in July).

**PERSONS TAKING AND PASSING THE 2005 BAR EXAMINATION
BY SOURCE OF LEGAL EDUCATION**

<i>Jurisdiction</i>	<i>ABA-Approved Law School</i>			<i>Non-ABA-Approved Law School</i>			<i>Law School Outside the USA</i>			<i>Law Office Study</i>		
	<i>Taking</i>	<i>Passing</i>	<i>Percent Passing</i>	<i>Taking</i>	<i>Passing</i>	<i>Percent Passing</i>	<i>Taking</i>	<i>Passing</i>	<i>Percent Passing</i>	<i>Taking</i>	<i>Passing</i>	<i>Percent Passing</i>
Montana	190	159	84%	—	—	—	—	—	—	—	—	—
Nebraska	199	146	73%	—	—	—	—	—	—	—	—	—
Nevada	777	457	59%	5	2	40%	7	4	57%	—	—	—
New Hampshire	218	118	54%	17	9	53%	—	—	—	—	—	—
New Jersey	4,507	3,139	70%	—	—	—	—	—	—	—	—	—
New Mexico	341	277	81%	1	0	0%	—	—	—	—	—	—
New York	10,033	7,213	72%	3	0	0%	3,337	1,119	34%	15	2	13%
North Carolina	1,328	851	64%	—	—	—	—	—	—	—	—	—
North Dakota	65	54	83%	—	—	—	—	—	—	—	—	—
N. Mariana Islands	9	9	100%	—	—	—	—	—	—	—	—	—
Ohio	1,885	1,351	72%	—	—	—	20	5	25%	—	—	—
Oklahoma	519	424	82%	—	—	—	—	—	—	—	—	—
Oregon	774	521	67%	5	0	0%	4	0	0%	—	—	—
Palau	6	5	83%	—	—	—	1	0	0%	—	—	—
Pennsylvania	2,970	2,078	70%	1	1	100%	4	1	25%	—	—	—
Puerto Rico	940	386	41%	152	34	22%	4	0	0%	—	—	—
Rhode Island	243	157	65%	—	—	—	—	—	—	—	—	—
South Carolina	568	452	80%	—	—	—	—	—	—	—	—	—
South Dakota	128	92	72%	—	—	—	—	—	—	—	—	—
Tennessee	765	607	79%	108	53	49%	34	11	32%	—	—	—
Texas	3,974	2,838	71%	7	2	29%	17	5	29%	—	—	—
Utah	436	376	86%	—	—	—	—	—	—	—	—	—
Vermont	123	93	76%	—	—	—	—	—	—	5	0	0%
Virgin Islands	62	43	69%	2	1	50%	—	—	—	—	—	—
Virginia	1,869	1,304	70%	—	—	—	48	10	21%	12	2	17%
Washington	1,401	1,000	71%	—	—	—	—	—	—	—	—	—
West Virginia	333	214	64%	2	0	0%	—	—	—	—	—	—
Wisconsin	293	225	77%	5	4	80%	—	—	—	—	—	—
Wyoming	117	84	72%	—	—	—	—	—	—	—	—	—
TOTALS	72,136	49,517	69%	3,403	711	21%	3,571	1,183	33%	37	5	14%

FIRST-TIME EXAM TAKERS AND REPEATERS IN 2005

	<i>February First Timers Taking</i>	<i>February First Timers' Pass Rate</i>	<i>February Repeaters Taking</i>	<i>February Repeaters' Pass Rate</i>	<i>July First Timers Taking</i>	<i>July First Timers' Pass Rate</i>	<i>July Repeaters Taking</i>	<i>July Repeaters' Pass Rate</i>	<i>Total First Timers' Pass Rate</i>	<i>Total Repeaters' Pass Rate</i>
Alabama	154	68%	91	18%	438	84%	87	9%	80%	13%
Alaska	50	78%	12	42%	49	71%	21	19%	75%	27%
Arizona	257	74%	127	51%	647	71%	111	45%	72%	48%
Arkansas	62	82%	40	43%	219	77%	28	32%	78%	38%
California	1,281	54%	3,239	34%	5,909	64%	2,434	13%	62%	25%
Colorado	263	76%	183	48%	726	78%	115	22%	78%	38%
Connecticut	294	80%	108	39%	787	81%	85	26%	81%	33%
Delaware	<i>No February Examination</i>				214	63%	46	30%	63%	30%
District of Columbia	36	61%	263	54%	105	71%	189	33%	69%	45%
Florida	1,079	71%	534	31%	2,431	71%	463	13%	71%	23%
Georgia	234	75%	178	40%	1,056	86%	196	28%	84%	34%
Guam	6	100%	2	0%	3	100%	2	50%	100%	25%
Hawaii	84	85%	36	44%	166	79%	34	29%	81%	37%
Idaho	35	74%	24	58%	128	81%	20	50%	80%	55%
Illinois	643	80%	416	52%	2,543	86%	270	31%	85%	44%
Indiana	155	85%	88	51%	508	84%	68	22%	84%	38%
Iowa	62	87%	40	65%	210	86%	17	24%	86%	53%
Kansas	167	84%	51	63%	230	78%	28	36%	81%	53%
Kentucky	133	77%	90	56%	354	81%	65	34%	80%	46%
Louisiana	134	68%	218	75%	603	73%	107	40%	72%	64%
Maine	54	80%	36	42%	126	82%	30	40%	81%	41%
Maryland	289	69%	361	50%	1,330	76%	274	28%	74%	40%
Massachusetts	346	74%	318	46%	1,772	84%	238	22%	82%	36%
Michigan	308	68%	238	40%	727	78%	170	28%	75%	35%
Minnesota	110	85%	62	40%	714	89%	55	24%	88%	32%
Mississippi	99	89%	31	65%	254	88%	17	41%	88%	56%
Missouri	200	86%	102	54%	761	88%	65	34%	88%	46%
Montana	46	89%	18	50%	117	89%	9	22%	89%	41%

FIRST-TIME EXAM TAKERS AND REPEATERS IN 2005

	<i>February First Timers Taking</i>	<i>February First Timers' Pass Rate</i>	<i>February Repeaters Taking</i>	<i>February Repeaters' Pass Rate</i>	<i>July First Timers Taking</i>	<i>July First Timers' Pass Rate</i>	<i>July Repeaters Taking</i>	<i>July Repeaters' Pass Rate</i>	<i>Total First Timers' Pass Rate</i>	<i>Total Repeaters' Pass Rate</i>
Nebraska	15	53%	24	42%	138	88%	22	27%	85%	35%
Nevada	194	75%	137	55%	355	64%	103	16%	68%	38%
New Hampshire	58	64%	24	17%	130	60%	23	35%	61%	26%
New Jersey	546	76%	526	45%	3,082	78%	353	27%	77%	38%
New Mexico	99	77%	28	71%	192	90%	23	39%	85%	57%
New York	1,127	62%	2,086	39%	8,613	76%	1,562	17%	74%	30%
North Carolina	214	68%	209	54%	776	72%	129	26%	71%	43%
North Dakota	12	92%	9	56%	39	90%	5	60%	90%	57%
N. Mariana Islands	—	—	—	—	9	100%	—	—	100%	—
Ohio	219	74%	300	53%	1,225	81%	161	24%	80%	43%
Oklahoma	89	84%	66	65%	323	91%	41	32%	89%	52%
Oregon	129	65%	102	48%	483	76%	69	32%	74%	42%
Palau	1	100%	—	—	6	67%	—	—	71%	—
Pennsylvania	301	89%	440	44%	1,991	79%	243	22%	80%	36%
Puerto Rico ^a	120	33%	305	37%	464	50%	207	18%	46%	29%
Rhode Island	34	74%	26	50%	160	70%	23	30%	71%	41%
South Carolina	127	84%	51	53%	361	85%	29	38%	85%	48%
South Dakota	29	79%	15	40%	72	85%	12	17%	83%	30%
Tennessee	126	71%	97	54%	608	81%	76	46%	80%	50%
Texas	631	76%	547	51%	2,409	81%	411	36%	80%	44%
Utah	105	90%	27	67%	286	90%	18	39%	90%	56%
Vermont	28	93%	13	38%	81	75%	6	17%	80%	32%
Virgin Islands	26	69%	6	50%	28	71%	4	75%	70%	60%
Virginia	252	75%	310	53%	1,200	76%	167	29%	76%	44%
Washington	278	80%	210	70%	800	75%	113	24%	77%	54%
West Virginia	12	67%	104	57%	156	71%	63	57%	71%	57%
Wisconsin	92	82%	24	63%	163	79%	19	58%	80%	60%
Wyoming	9	67%	33	76%	50	82%	25	48%	80%	64%
TOTALS	11,454	72%	12,625	43%	47,327	77%	9,151	22%	76%	34%

a. Examinations are administered in March and September in Puerto Rico.

ATTORNEYS' EXAMINATIONS IN 2005

<i>Jurisdiction</i>	<i>Taking February</i>	<i>Passing February</i>	<i>Percent Passing February</i>	<i>Taking July</i>	<i>Passing July</i>	<i>Percent Passing July</i>	<i>Total Taking</i>	<i>Total Passing</i>	<i>Total Percent Passing</i>
California	376	205	55%	325	92	28%	701	297	42%
Georgia	115	97	84%	79	69	87%	194	166	86%
Maine	8	7	88%	4	4	100%	12	11	92%
Maryland	87	73	84%	90	79	88%	177	152	86%
Mississippi	1	1	100%	3	3	100%	4	4	100%
N. Mariana Islands	—	—	—	3	3	100%	3	3	100%
Rhode Island	16	14	88%	13	13	100%	29	27	93%
Utah	7	6	86%	9	8	89%	16	14	88%
TOTALS	610	403	66%	526	271	52%	1,136	674	59%

EXAMINATIONS ADMINISTERED TO DISBARRED OR SUSPENDED ATTORNEYS AS A CONDITION OF REINSTATEMENT IN 2005

<i>Jurisdiction</i>	<i>Taking</i>	<i>Passing</i>	<i>Percent Passing</i>
Colorado	6	1	17%
Kentucky	3	2	67%
Minnesota	3	2	67%
Missouri	1	1	100%
South Carolina	7	3	43%
TOTALS	20	9	45%

TEN-YEAR SUMMARY OF BAR PASSAGE RATES 1996-2005*

<i>Jurisdiction</i>		1996	1997	1998	1999	2000	2001	2001	2003	2004	2005
Alabama	Overall	61%	61%	64%	58%	55%	54%	55%	58%	63%	64%
	First-Time	75%	76%	78%	74%	71%	71%	78%	77%	83%	80%
Alaska	Overall	70%	65%	67%	58%	62%	69%	54%	56%	68%	63%
	First-Time	82%	73%	74%	67%	69%	77%	57%	73%	81%	75%
Arizona	Overall	76%	79%	73%	75%	73%	72%	70%	67%	67%	67%
	First-Time	80%	83%	78%	79%	80%	79%	77%	74%	74%	72%
Arkansas	Overall	78%	66%	67%	62%	49%	73%	68%	70%	69%	70%
	First-Time	85%	75%	74%	72%	59%	82%	80%	80%	78%	78%
California	Overall	52%	58%	48%	48%	50%	50%	45%	45%	44%	46%
	First-Time	67%	72%	64%	61%	64%	66%	61%	61%	60%	62%
Colorado	Overall	76%	75%	72%	74%	73%	73%	71%	70%	65%	68%
	First-Time	87%	82%	79%	81%	80%	79%	79%	75%	73%	78%
Connecticut	Overall	79%	81%	77%	74%	70%	75%	73%	76%	73%	74%
	First-Time	85%	85%	82%	79%	76%	81%	80%	82%	81%	81%
Delaware	Overall	50%	58%	61%	56%	63%	65%	62%	64%	61%	57%
	First-Time	<i>n/a</i>	62%	70%	57%	69%	73%	69%	73%	67%	63%
District of Columbia	Overall	49%	56%	58%	59%	58%	59%	55%	51%	51%	51%
	First-Time	71%	77%	75%	80%	76%	69%	70%	70%	74%	69%
Florida	Overall	77%	79%	75%	72%	69%	71%	68%	67%	64%	60%
	First-Time	83%	84%	82%	80%	77%	80%	77%	76%	74%	71%
Georgia	Overall	79%	73%	70%	72%	69%	71%	70%	70%	72%	73%
	First-Time	88%	83%	81%	81%	81%	84%	83%	84%	85%	84%
Guam	Overall	63%	69%	42%	60%	35%	57%	53%	67%	53%	77%
	First-Time	71%	81%	52%	68%	44%	78%	70%	75%	67%	100%
Hawaii	Overall	69%	69%	73%	65%	66%	70%	68%	79%	66%	71%
	First-Time	72%	74%	80%	69%	75%	77%	77%	87%	74%	81%
Idaho	Overall	71%	67%	73%	72%	60%	71%	60%	70%	70%	74%
	First-Time	79%	72%	80%	74%	65%	78%	69%	78%	78%	80%
Illinois	Overall	82%	80%	76%	77%	76%	76%	72%	75%	76%	78%
	First-Time	86%	86%	81%	83%	83%	84%	81%	84%	85%	85%
Indiana	Overall	74%	90%	87%	79%	84%	76%	70%	70%	73%	75%
	First-Time	77%	92%	90%	83%	85%	81%	79%	78%	82%	84%
Iowa	Overall	75%	80%	79%	80%	81%	84%	80%	78%	80%	80%
	First-Time	80%	85%	84%	83%	86%	87%	86%	82%	87%	86%
Kansas	Overall	80%	87%	83%	85%	81%	76%	82%	78%	76%	76%
	First-Time	85%	90%	87%	88%	84%	81%	86%	83%	81%	81%
Kentucky	Overall	79%	66%	80%	78%	78%	78%	76%	70%	74%	72%
	First-Time	83%	68%	83%	83%	83%	82%	81%	76%	80%	80%

* Most figures are derived from prior issues of THE BAR EXAMINER; jurisdictions have also provided updated information.

TEN-YEAR SUMMARY OF BAR PASSAGE RATES 1996-2005*

<i>Jurisdiction</i>		1996	1997	1998	1999	2000	2001	2002	2003	2004	2005
Louisiana	Overall	66%	59%	62%	64%	65%	70%	67%	61%	69%	69%
	First-Time	66%	61%	62%	64%	64%	72%	65%	61%	70%	72%
Maine	Overall	72%	67%	70%	62%	59%	62%	62%	64%	63%	70%
	First-Time	80%	70%	75%	67%	60%	68%	69%	76%	71%	81%
Maryland	Overall	69%	65%	70%	65%	69%	65%	61%	62%	61%	65%
	First-Time	76%	71%	76%	72%	77%	74%	72%	72%	71%	74%
Massachusetts	Overall	74%	75%	69%	69%	68%	69%	66%	65%	73%	72%
	First-Time	81%	83%	78%	78%	77%	81%	79%	79%	84%	82%
Michigan	Overall	73%	81%	74%	68%	71%	64%	74%	67%	64%	64%
	First-Time	83%	89%	81%	77%	79%	73%	81%	75%	75%	75%
Minnesota	Overall	86%	86%	80%	81%	82%	86%	82%	85%	83%	81%
	First-Time	90%	91%	86%	88%	89%	92%	89%	91%	89%	88%
Mississippi	Overall	83%	86%	78%	82%	79%	88%	81%	86%	86%	85%
	First-Time	91%	90%	83%	82%	86%	91%	88%	92%	91%	88%
Missouri	Overall	80%	82%	79%	75%	73%	74%	73%	73%	81%	81%
	First-Time	84%	85%	84%	79%	78%	80%	81%	82%	88%	88%
Montana	Overall	94%	91%	89%	85%	88%	89%	79%	81%	79%	84%
	First-Time	94%	91%	89%	86%	89%	90%	78%	81%	83%	89%
Nebraska	Overall	90%	86%	84%	88%	81%	82%	76%	79%	77%	73%
	First-Time	94%	88%	86%	89%	85%	84%	81%	84%	86%	85%
Nevada	Overall	63%	65%	60%	64%	59%	64%	59%	61%	56%	59%
	First-Time	69%	67%	66%	69%	62%	70%	67%	65%	69%	68%
New Hampshire	Overall	69%	76%	70%	73%	66%	65%	60%	60%	56%	54%
	First-Time	73%	77%	76%	79%	71%	67%	67%	63%	63%	61%
New Jersey	Overall	70%	70%	63%	66%	63%	66%	63%	64%	69%	70%
	First-Time	77%	76%	70%	74%	72%	74%	71%	73%	78%	77%
New Mexico	Overall	85%	91%	86%	87%	86%	87%	86%	81%	79%	81%
	First-Time	91%	94%	92%	91%	89%	92%	89%	84%	85%	85%
New York	Overall	67%	66%	64%	64%	62%	65%	61%	63%	62%	62%
	First-Time	77%	77%	76%	74%	76%	76%	74%	75%	74%	74%
North Carolina	Overall	71%	75%	70%	69%	65%	68%	65%	65%	63%	64%
	First-Time	77%	83%	78%	76%	74%	79%	77%	75%	75%	71%
North Dakota	Overall	86%	84%	83%	85%	88%	91%	85%	75%	75%	83%
	First-Time	90%	85%	86%	89%	88%	94%	85%	78%	79%	90%
N. Mariana Islands	Overall	33%	78%	44%	43%	67%	55%	46%	60%	70%	100%
	First-Time	33%	57%	27%	29%	89%	71%	55%	50%	75%	100%
Ohio	Overall	86%	77%	69%	68%	67%	71%	65%	68%	67%	71%
	First-Time	90%	81%	76%	75%	75%	81%	76%	78%	80%	80%

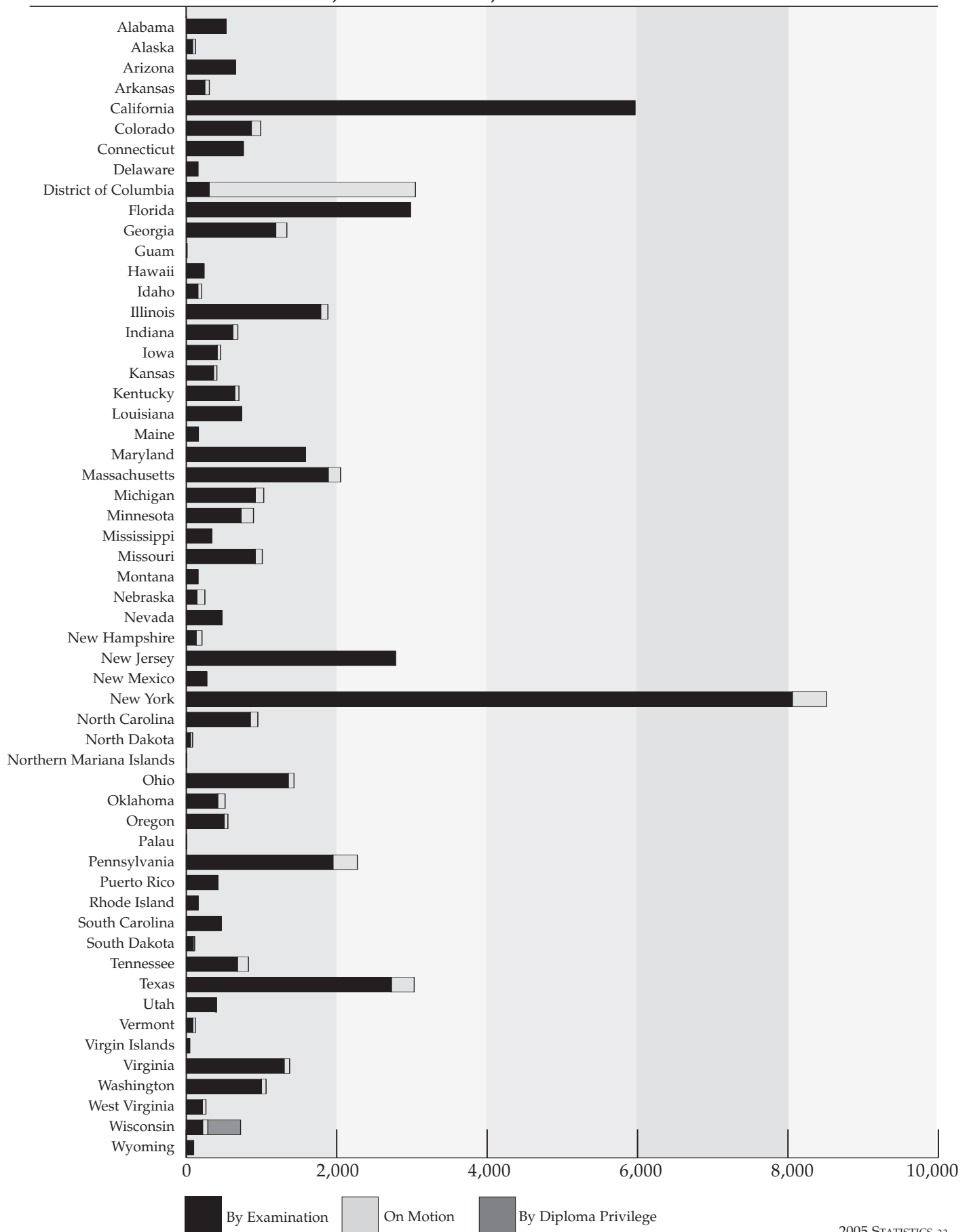
* Most figures are derived from prior issues of THE BAR EXAMINER; jurisdictions have also provided updated information.

TEN-YEAR SUMMARY OF BAR PASSAGE RATES 1996-2005*

<i>Jurisdiction</i>		1996	1997	1998	1999	2000	2001	2002	2003	2004	2005
Oklahoma	Overall	78%	80%	83%	80%	76%	77%	69%	71%	73%	82%
	First-Time	85%	83%	85%	83%	80%	82%	77%	80%	83%	89%
Oregon	Overall	74%	69%	64%	64%	68%	74%	71%	72%	67%	67%
	First-Time	78%	74%	70%	70%	73%	81%	78%	79%	75%	74%
Palau	Overall	<i>n/a</i>	67%	<i>n/a</i>	40%	67%	100%	88%	67%	100%	71%
	First-Time	<i>n/a</i>	0%	100%	50%	71%	100%	88%	100%	100%	71%
Pennsylvania	Overall	68%	73%	66%	66%	65%	67%	65%	67%	68%	70%
	First-Time	75%	80%	75%	73%	73%	75%	76%	76%	79%	80%
Puerto Rico	Overall	56%	54%	50%	48%	48%	46%	49%	48%	47%	38%
	First-Time	67%	61%	55%	58%	60%	56%	61%	56%	54%	46%
Rhode Island	Overall	71%	69%	61%	68%	59%	74%	57%	62%	70%	65%
	First-Time	70%	67%	69%	78%	64%	82%	68%	66%	76%	71%
South Carolina	Overall	87%	84%	75%	73%	79%	82%	78%	75%	77%	80%
	First-Time	90%	86%	80%	75%	82%	87%	81%	80%	82%	85%
South Dakota	Overall	83%	88%	86%	80%	83%	92%	93%	80%	69%	72%
	First-Time	85%	90%	86%	84%	88%	95%	93%	81%	71%	83%
Tennessee	Overall	72%	72%	70%	71%	77%	75%	67%	75%	77%	74%
	First-Time	80%	79%	76%	78%	82%	81%	76%	80%	83%	80%
Texas	Overall	75%	76%	73%	75%	72%	74%	68%	72%	68%	71%
	First-Time	82%	83%	80%	81%	80%	81%	77%	81%	77%	80%
Utah	Overall	87%	93%	91%	87%	91%	90%	84%	87%	87%	86%
	First-Time	92%	93%	92%	88%	93%	94%	86%	90%	89%	90%
Vermont	Overall	70%	64%	73%	71%	65%	66%	71%	75%	75%	73%
	First-Time	83%	75%	80%	80%	73%	76%	76%	82%	83%	80%
Virgin Islands	Overall	67%	60%	<i>n/a</i>	88%	56%	69%	56%	58%	55%	69%
	First-Time	71%	60%	<i>n/a</i>	87%	59%	73%	59%	66%	76%	70%
Virginia	Overall	75%	67%	65%	68%	65%	67%	64%	65%	64%	68%
	First-Time	79%	74%	71%	73%	72%	74%	74%	73%	72%	76%
Washington	Overall	75%	75%	71%	75%	76%	72%	71%	70%	73%	71%
	First-Time	73%	74%	74%	80%	80%	77%	76%	71%	79%	77%
West Virginia	Overall	75%	78%	76%	76%	73%	68%	64%	62%	69%	64%
	First-Time	78%	84%	82%	81%	78%	68%	72%	71%	77%	71%
Wisconsin	Overall	89%	86%	84%	88%	78%	75%	74%	74%	79%	77%
	First-Time	91%	87%	88%	89%	82%	79%	78%	81%	80%	80%
Wyoming	Overall	64%	77%	68%	61%	63%	82%	66%	67%	60%	72%
	First-Time	69%	79%	69%	67%	72%	82%	67%	68%	63%	80%
AVERAGES	Overall	70%	70%	66%	66%	65%	66%	63%	64%	64%	64%
	First-Time	79%	79%	76%	75%	75%	77%	74%	75%	75%	76%

* Most figures are derived from prior issues of THE BAR EXAMINER; jurisdictions have also provided updated information.

2005 ADMISSIONS TO THE BAR BY EXAMINATION, ON MOTION, AND BY DIPLOMA PRIVILEGE



ADMISSIONS TO THE BAR BY JURISDICTION 2001-2005

<i>Jurisdiction</i>	<i>Admission by Examination</i>					<i>Admission on Motion</i>				
	2001	2002	2003	2004	2005	2001	2002	2003	2004	2005
Alabama	503	516	611	509	530	—	—	—	—	—
Alaska	74	51	78	80	83	19	24	14	30	39
Arizona	579	676	633	690	656	—	—	—	—	—
Arkansas	289	212	226	231	246	—	—	—	—	60
California	6,267	5,524	5,759	5,626	5,965	—	—	—	—	—
Colorado	756	904	790	715	865	244	139	84	94	124
Connecticut	811	806	734	691	758	31	10	25	12	—
Delaware	152	164	145	146	155	—	—	—	—	—
District of Columbia	294	347	337	337	305	2,991	2,917	2,157	2,629	2,741
Florida	2,421	2,553	2,674	2,863	2,980	—	—	—	—	—
Georgia	1,180	1,187	1,285	1,183	1,190	—	—	144	181	146
Guam	8	11	6	9	9	—	—	—	8	—
Hawaii	314	110	221	171	235	—	—	—	—	—
Idaho	171	106	136	128	154	—	61	65	66	51
Illinois	2,520	2,474	2,528	2,696	1,787	110	82	94	79	95
Indiana	544	517	528	589	618	52	49	47	71	67
Iowa	205	194	246	275	411	47	44	62	48	45
Kansas	365	499	373	378	362	—	—	—	—	44
Kentucky	525	517	392	461	644	29	33	51	54	55
Louisiana	589	539	547	707	738	—	—	—	—	—
Maine	135	151	135	178	161	—	—	—	—	—
Maryland	1,392	1,371	1,382	1,409	1,586	—	—	—	—	—
Massachusetts	2,108	2,039	1,847	1,839	1,887	163	166	182	168	163
Michigan	797	899	850	862	918	124	111	128	143	111
Minnesota	714	677	702	736	729	143	152	143	134	164
Mississippi	304	336	429	389	339	—	—	—	10	0
Missouri	835	838	876	981	917	50	62	56	87	93
Montana	134	96	119	145	155	1	1	—	—	—
Nebraska	174	192	144	157	141	96	72	102	111	105

ADMISSIONS TO THE BAR BY JURISDICTION 2001-2005

<i>Jurisdiction</i>	<i>Admission by Examination</i>					<i>Admission on Motion</i>				
	2001	2002	2003	2004	2005	2001	2002	2003	2004	2005
Nevada	389	352	387	451	476	—	—	—	—	—
New Hampshire	148	165	124	135	131	—	—	10	98	77
New Jersey	2,706	2,365	2,762	2,663	2,781	—	—	—	—	—
New Mexico	203	223	250	241	272	—	—	—	—	—
New York	7,125	7,663	7,875	8,103	8,058	330	317	383	389	457
North Carolina	763	721	753	721	851	88	88	54	95	99
North Dakota	30	26	32	44	55	17	13	22	22	28
N. Mariana Islands	7	8	12	16	3	8	—	—	11	—
Ohio	1,243	1,134	1,303	1,270	1,356	115	94	78	49	76
Oklahoma	343	304	345	346	418	29	32	29	64	97
Oregon	534	503	514	497	504	—	93	107	77	48
Palau	5	4	2	4	5	—	—	—	—	—
Pennsylvania	1,496	1,432	1,780	1,773	1,950	240	99	195	168	324
Puerto Rico	418	427	409	519	420	—	—	—	—	—
Rhode Island	217	177	172	193	157	—	—	—	—	—
South Carolina	375	364	362	396	465	—	—	—	—	—
South Dakota	76	90	77	84	92	—	—	—	13	18
Tennessee	555	508	586	694	680	120	104	128	161	145
Texas	2,643	2,404	2,711	2,614	2,727	254	249	236	284	303
Utah	344	345	326	310	390	—	—	11	49	12
Vermont	30	66	77	65	87	32	30	24	49	37
Virgin Islands	45	26	30	16	45	—	4	5	—	—
Virginia	1,286	1,172	1,114	1,175	1,301	131	124	88	71	72
Washington	964	1,294	1,941	1,094	1,000	320	200	257	241	60
West Virginia	187	199	208	235	214	41	50	48	51	47
Wisconsin	224	234	200	211	217	80	76	85	66	69
Wyoming	59	60	66	76	89	6	10	17	26	9
TOTALS	47,575	46,772	49,151	49,127	50,268	5,911	5,506	5,131	5,909	6,081

ADMISSIONS TO THE BAR BY JURISDICTION 2001-2005

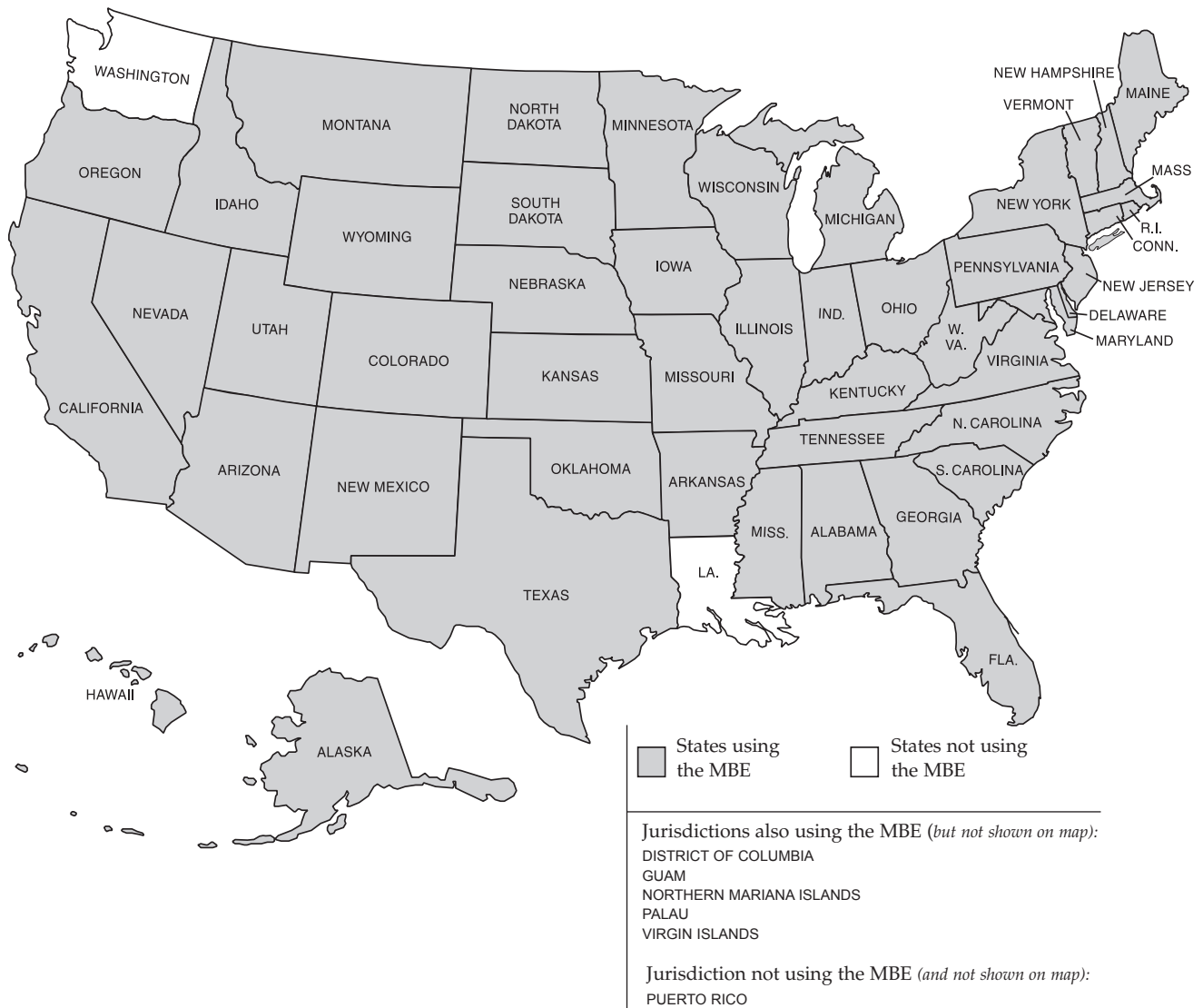
<i>Jurisdiction</i>	<i>Admission as Foreign Legal Consultants</i>					<i>Admission by Diploma Privilege</i>				
	2001	2002	2003	2004	2005	2001	2002	2003	2004	2005
Arizona	—	—	4	—	1	—	—	—	—	—
California	21	—	34	32	3	—	—	—	—	—
District of Columbia	11	11	15	9	9	—	—	—	—	—
Florida	23	26	29	31	30	—	—	—	—	—
Georgia	—	2	3	3	—	—	—	—	—	—
Illinois	1	—	3	1	1	—	—	—	—	—
Massachusetts	—	—	1	1	1	—	—	—	—	—
Michigan	2	—	1	—	1	—	—	—	—	—
Minnesota	—	—	1	—	—	—	—	—	—	—
New Jersey	3	1	1	1	—	—	—	—	—	—
New York	14	19	23	14	7	—	—	—	—	—
Ohio	2	—	1	2	1	—	—	—	—	—
Texas	—	1	—	3	4	—	—	—	—	—
Utah	1	—	—	—	—	—	—	—	—	—
Washington	—	—	—	—	1	—	—	—	—	—
Wisconsin	—	—	—	—	—	422	463	425	412	436
TOTALS	78	60	116	97	59	422	463	425	412	436

MULTISTATE BAR EXAMINATION STATISTICS

The National Conference of Bar Examiners has produced the Multistate Bar Examination (MBE) since 1972. In 2005, the MBE was used in 53 jurisdictions.

The MBE is a 200-item multiple-choice examination covering constitutional law, contracts, criminal law and procedure, evidence, real property, and torts. Both raw and scaled scores are computed for each applicant. Raw scores on different forms of the test are not comparable due to differences in the difficulty of test forms. Scaled scores are produced by a statistical procedure called equating that involves repeating items from previous examinations. A comparison of the performance of the current applicant population on the repeated items to performance of the prior applicant group allows conclusions to be drawn about the relative difficulty of the new items on the exam, and test scores are adjusted accordingly. Scaled scores are comparable across administrations of the examination.

JURISDICTIONS USING THE MULTISTATE BAR EXAMINATION IN 2005



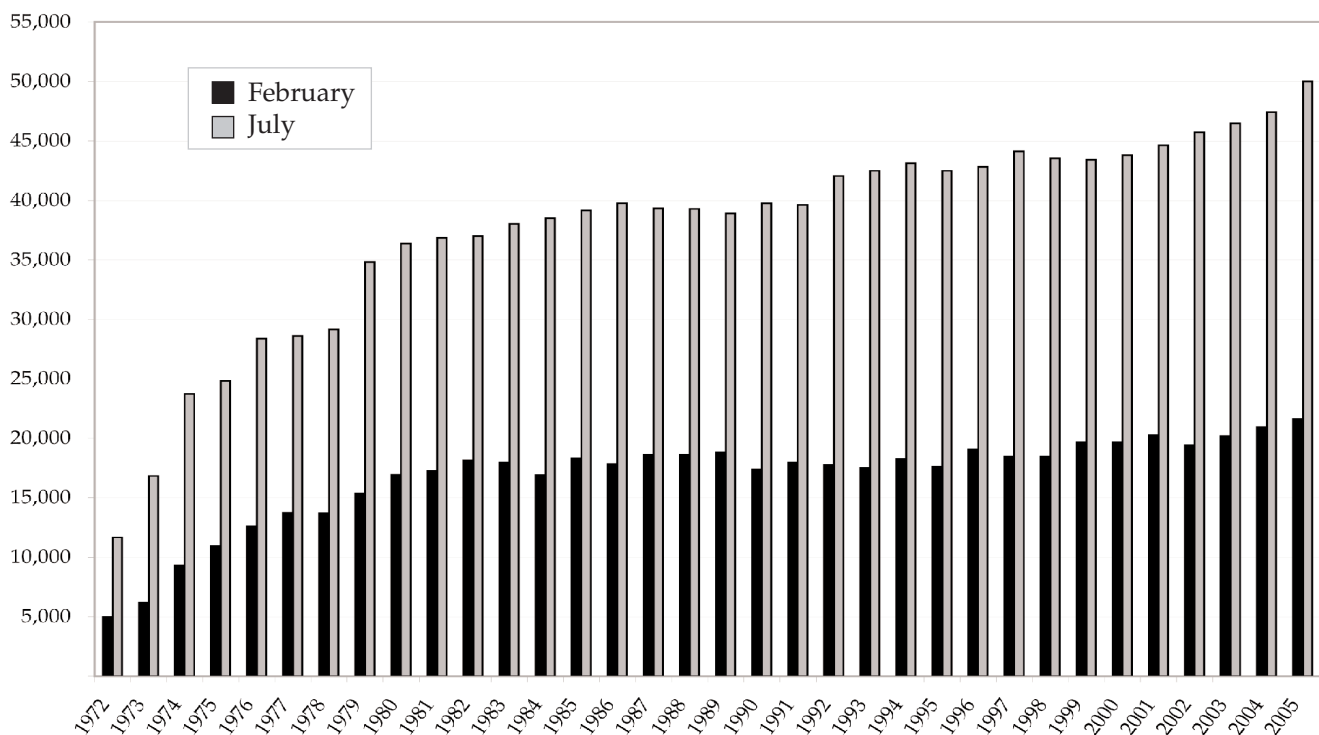
MBE SUMMARY STATISTICS*

February 2005			July 2005		
Total Scores			Total Scores		
21,265 Applicants	Total Raw	Total Scaled	49,998 Applicants	Total Raw	Total Scaled
Mean	120.10	137.67	Mean	132.07	141.61
Standard Deviation	17.93	15.65	Standard Deviation	19.63	15.87
Maximum	178	183	Maximum	190	190
Minimum	46	78	Minimum	41	72
Median	120	138	Median	133	142

NUMBER OF APPLICANTS TAKING THE MBE*

	February	July	Total	February	July	Total	February	July	Total	
1972	4,955	11,672	16,627	1984	16,938	38,511	1996	19,054	42,811	61,865
1973	6,182	16,826	23,008	1985	18,303	39,149	1997	18,468	44,128	62,596
1974	9,316	23,728	33,044	1986	17,825	39,774	1998	18,475	43,540	62,015
1975	10,963	24,835	35,798	1987	18,606	39,335	1999	19,646	43,417	63,063
1976	12,610	28,381	40,991	1988	18,610	39,284	2000	19,673	43,791	63,464
1977	13,738	28,608	42,346	1989	18,821	38,900	2001	20,288	44,637	64,925
1978	13,715	29,171	42,886	1990	17,382	39,750	2002	19,399	45,732	65,131
1979	15,341	34,818	50,159	1991	17,954	39,621	2003	20,204	46,486	66,690
1980	16,948	36,368	53,316	1992	17,755	42,064	2004	20,946	47,433	68,379
1981	17,289	36,846	54,135	1993	17,497	42,505	2005	21,625	49,998	71,623
1982	18,150	36,995	55,145	1994	18,267	43,127				
1983	17,964	38,034	55,998	1995	17,605	42,498				

APPLICANTS PER YEAR*



*The current-year statistics do not reflect data from hand-scored answer sheets; in each administration of the MBE, an insignificant number of answer sheets are hand scored for various reasons. Statistics for administrations before 2000 may include those for applicants with hand-scored answer sheets.

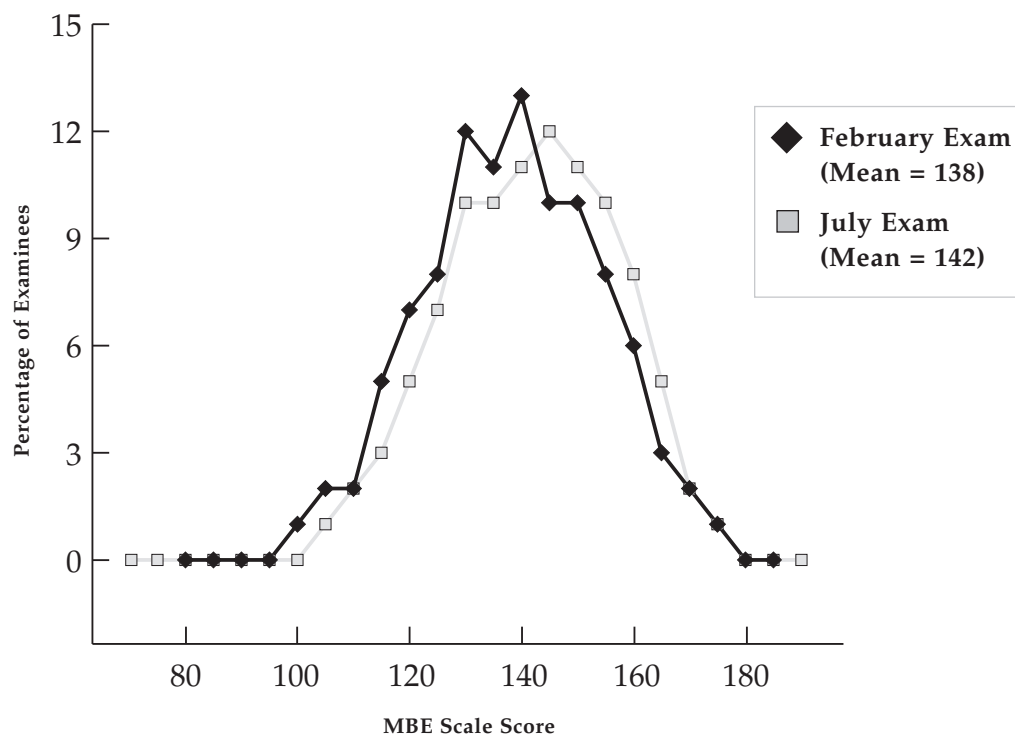
NATIONAL MEAN SCALED SCORES FOR THE MBE*

	1980	1981	1982	1983	1984	1985	1986	1987	1988	1989	1990	1991	1992	1993	1994
February	134.3	135.8	134.8	134.2	135.1	136.4	135.5	136.4	137.2	137.8	135.9	137.5	139.0	138.7	139.3
July	140.6	140.8	139.7	141.5	139.2	140.6	140.3	140.3	139.8	142.0	141.4	141.1	142.9	142.8	145.2

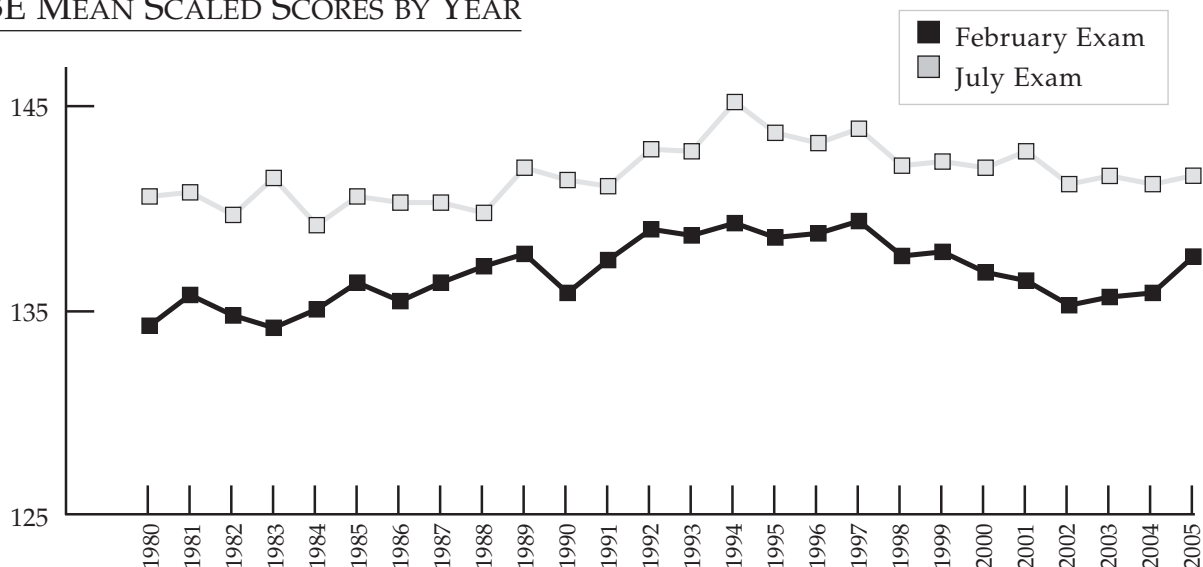
	1995	1996	1997	1998	1999	2000	2001	2002	2003	2004	2005
February	138.6	138.8	139.4	137.7	137.9	136.9	136.5	135.3	135.7	135.9	137.7
July	143.7	143.2	143.9	142.1	142.3	142.0	142.8	141.2	141.6	141.2	141.6

*The current-year statistics do not reflect data from hand-scored answer sheets; in each administration of the MBE, an insignificant number of answer sheets are hand scored for various reasons. Statistics for administrations before 2000 may include those for applicants with hand-scored answer sheets.

2005 MBE SCORE DISTRIBUTIONS*



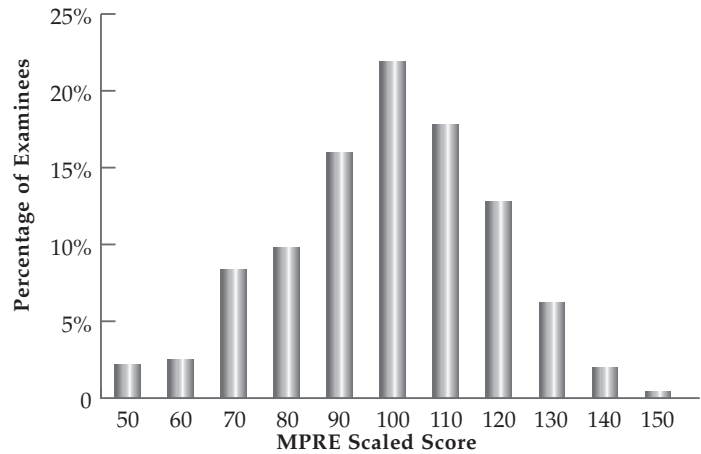
MBE MEAN SCALED SCORES BY YEAR



2005 MPRE SCORE DISTRIBUTIONS

2005 MPRE INFORMATION

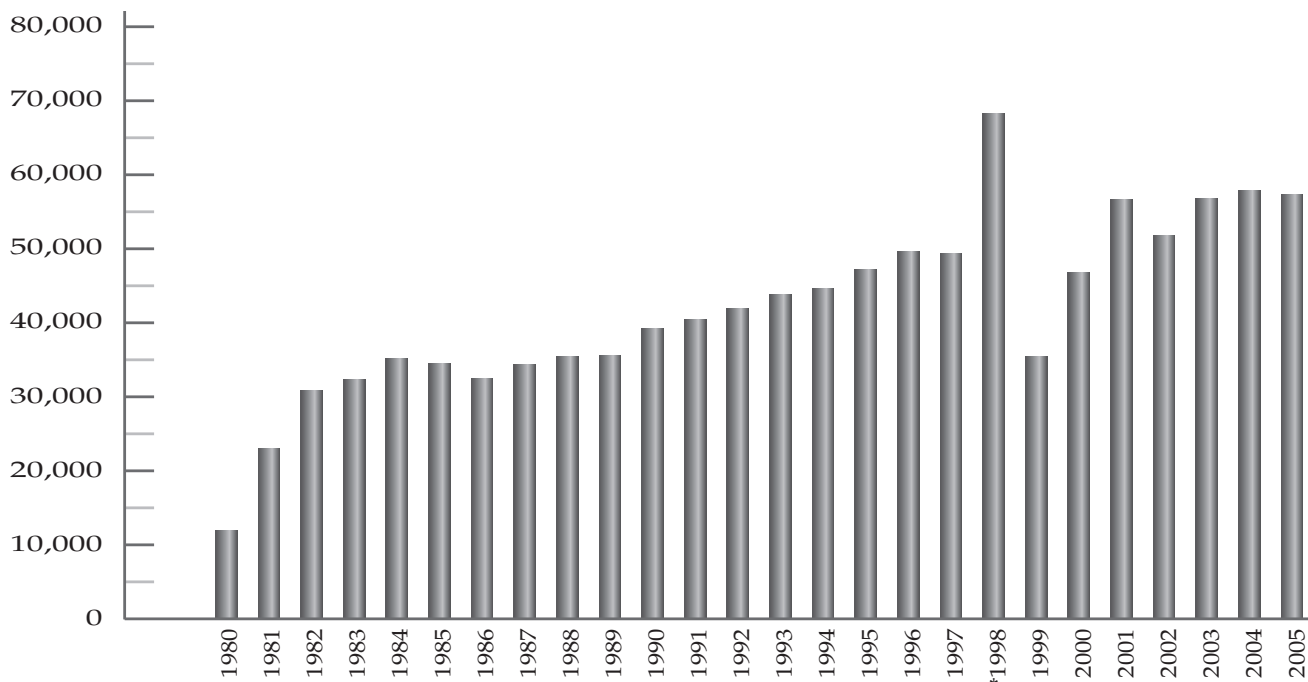
	March	August	November	2005 Total
Number of Examinees	19,869	15,703	21,725	57,297
Mean Scaled Score	93.31	98.04	99.60	98.72
Standard Deviation	19.65	19.66	19.79	19.72
Maximum	150	150	150	150
Minimum	50	50	50	50



NUMBER OF APPLICANTS TAKING THE MPRE

	1980	1981	1982	1983	1984	1985	1986	1987	1988	1989	1990	1991	1992	1993	1994	1995
Number of Examinees	11,913	22,982	30,902	32,402	35,113	34,507	32,456	34,358	35,440	35,532	39,192	40,448	41,884	43,782	44,664	47,213
	1996	1997	1998	1999	2000	2001	2002	2003	2004	2005						
Number of Examinees	49,680	49,348	68,230*	35,444	46,864	56,713	51,825	56,854	57,829	57,297						

APPLICANTS PER YEAR



*In November 1998, almost twice the usual number of examinees took the MPRE. This record number is likely attributable to anticipation of a change to the test specifications that became effective in March 1999.

MULTISTATE PERFORMANCE TEST

The National Conference of Bar Examiners has produced the Multistate Performance Test (MPT) since 1997. In 2005, the MPT was used in 32 jurisdictions. Montana began administering the MPT in 2006, and Maryland will administer the MPT beginning in 2007.

The MPT is designed to test an applicant’s ability to use fundamental lawyering skills in a realistic situation. Each test evaluates an applicant’s ability to complete a task that a beginning lawyer should be able to accomplish. The MPT requires applicants to (1) sort detailed factual materials and separate relevant from irrelevant facts; (2) analyze statutory, case, and administrative materials for relevant principles of law; (3) apply the relevant law to the relevant facts in a manner likely to resolve a client’s problem; (4) identify and resolve ethical dilemmas, when present; (5) communicate effectively in writing; and (6) complete a lawyering task within time constraints. Each jurisdiction determines its own policy with regard to the relative weight given to the MPT and other scores. Grading of the MPT is the exclusive responsibility of the jurisdiction administering the exam.

JURISDICTIONS USING THE MULTISTATE PERFORMANCE TEST IN 2005

